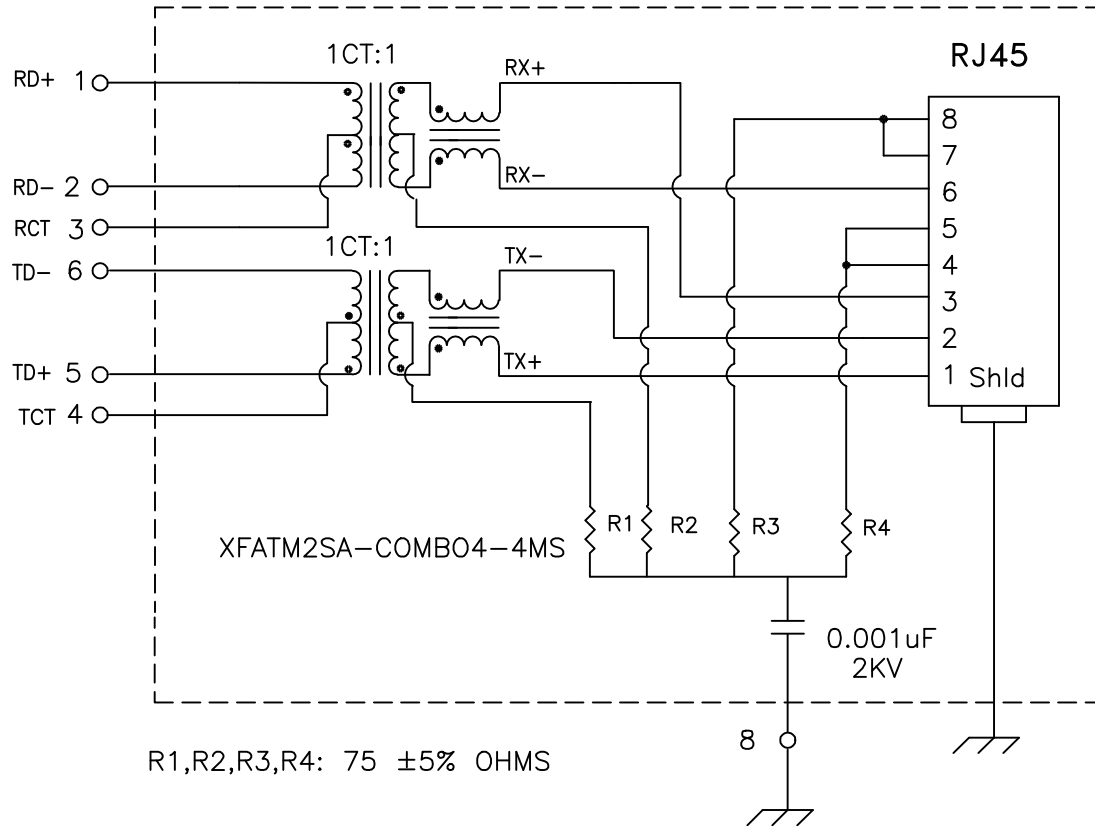


Schematic: (one of four)



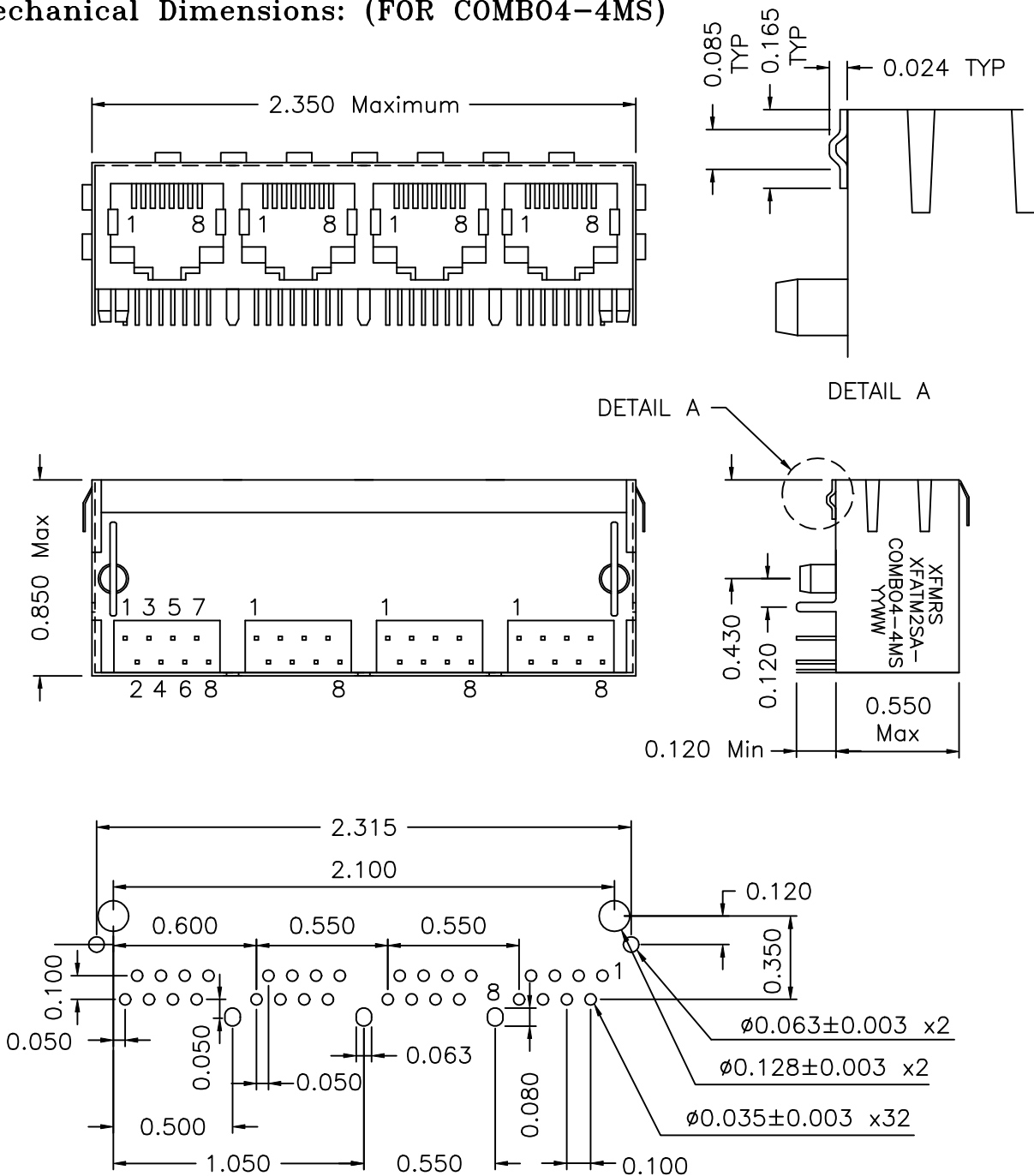
Electrical Specifications: @25°C

Isolation Voltage: 2250 Vrms (INPUT to OUTPUT)
 UTP SIDE OCL: 350uH Min @100KHz 100mV 8mADC
 Rise Time (10-90%): 2.5ns Typical
 Insertion Loss (100KHz-999KHz): -1.0dB Maximum
 (1.0MHz-15.0MHz): -0.3dB Maximum
 (15.1MHz-60.0MHz): -0.6dB Maximum
 (60.1MHz-100MHz): -1.1dB Maximum
 Return Loss: (100KHz-60.0MHz): -18dB Minimum
 (60.1MHz-80MHz): -15dB Minimum
 (80.1MHz-100MHz): -12dB Minimum
 Crosstalk: (100KHz-60MHz): -43dB Minimum
 (60.1MHz-100MHz): -38dB Minimum
 Common Mode to Differential Mode Rejection:
 100KHz-60MHz -46dB Min (Tx) / -35dB Min (Rx)
 60MHz-100MHz -42dB Min (Tx) / -33dB Min (Rx)

DOC. REV A/1

XFMRS Inc.	Title: QUAD PORT COMBO		
UNLESS OTHERWISE SPECIFIED	XFATM2SA-COMBO4-4MS	REV. A	
TOLERANCES: .xxx ±0.010	DWN.	廖玉坤	Feb-22-01
Dimensions in Inch	CHK.	李清儿	Feb-22-01
SHEET 1 OF 2	APP.	BW	Feb-22-01

Mechanical Dimensions: (FOR COMB04-4MS)



SUGGESTED MOUNTING PATTERN

DOC. REV: A/1

XFMRs Inc. UNLESS OTHERWISE SPECIFIED TOLERANCES: .xxx ±0.010 Dimensions in Inch SHEET 2 OF 2	Title: Mechanical Dimensions For COMB04-4MS Series		
	P/N: XFATM2SA-COMB04-4MS		REV. A
	DWN.	BW	Jun-28-00
	CHK.	JOE HUFF	Jun-28-00
	APP.	AEI	Jun-28-00