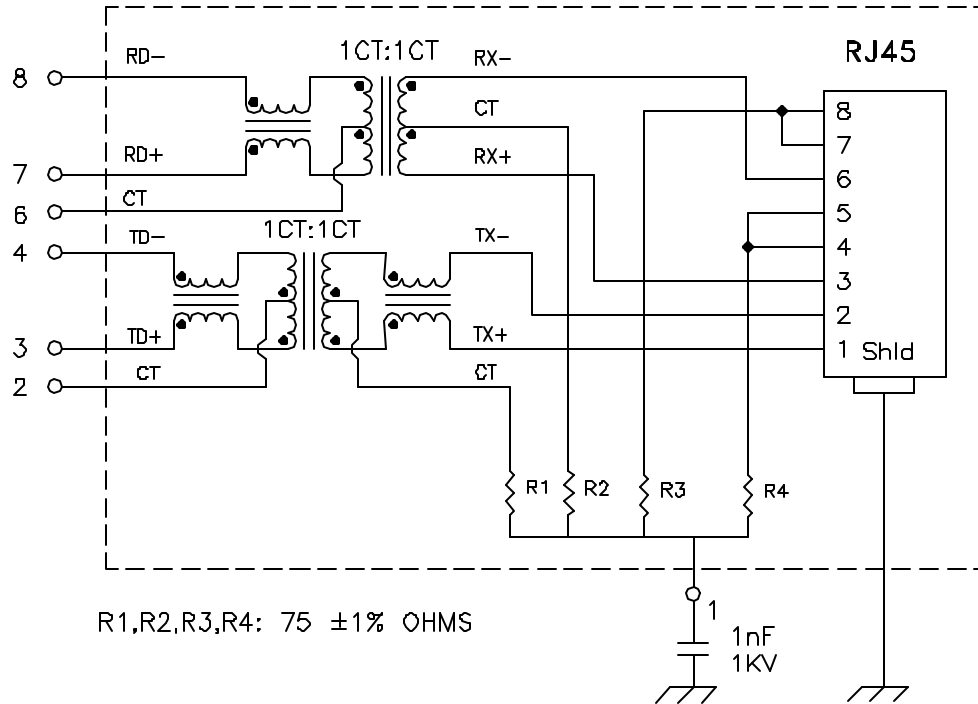


Schematic: (ONE OF FOUR)



Electrical Specifications: @25°C

Isolation Voltage: 1500Vrms(INPUT to OUTPUT), 500Vrms(TD to RD)

UTP SIDE OCL: 350uH Min @100KHz 100mV 8mA DC

Rise Time (10-90%): 2.5ns Typical

Insertion Loss (300KHz-100MHz): -1.1dB Maximum

Insertion Loss (100MHz-125MHz): -1.5dB Maximum

Return Loss: -18dB Min. @30MHz

-12dB Min. @80MHz

Crosstalk:

100KHz-60MHz -40dB Typical

60MHz-100MHz -38dB Typical

Common Mode to Differential Mode Rejection:

100KHz-60MHz -45dB Typ (Tx) / -40dB Typ (Rx)

60MHz-100MHz -40dB Typ (Tx) / -35dB Typ (Rx)

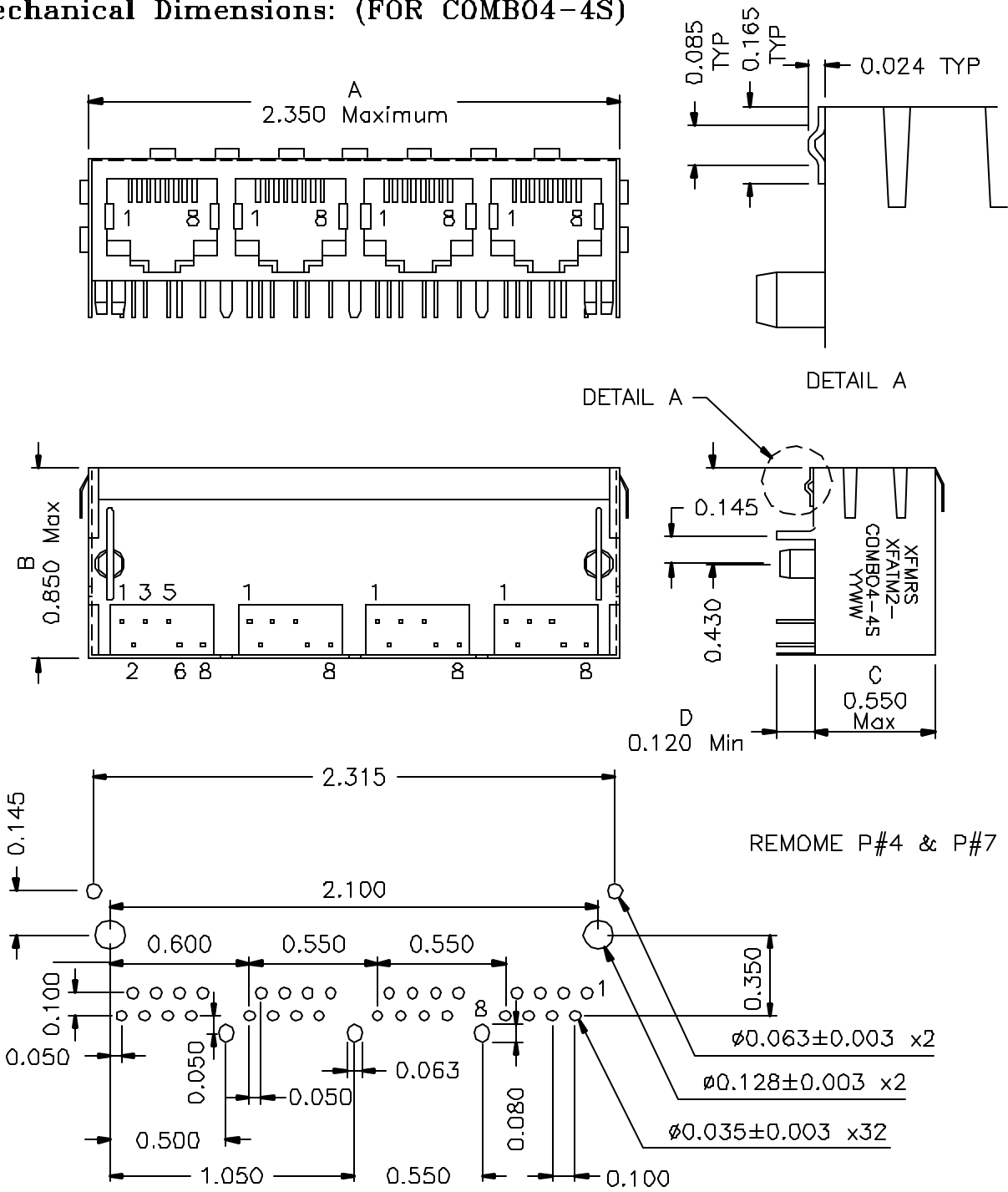
Note.

1. Solderability: Leads shall meet MIL-STD-202, Method 208D for solderability.
2. Flammability: UL94V-0,
3. ASTM oxygen index: > 28% ,
4. Temperature rating: 155°C. UL file E151556,
5. Operating Temperature Range. All listed parameters are to be within tolerance from -40°C to +85°C

DOC. REV A/1

XFMRs Inc. UNLESS OTHERWISE SPECIFIED TOLERANCES: .xxx ±0.010 Dimensions in Inch SHEET 1 OF 1	Title: FOUR PORTS COMBO			
	P/N: XFATM2-COMBO4-4S		REV: A	
	DWN.	廖玉坤	Dec-06-00	
	CHK.	李清儿	Dec-06-00	
APP.	BW	Dec-06-00		

Mechanical Dimensions: (FOR COMB04-4S)



REMOVE P#4 & P#7

SUGGESTED MOUNTING PATTERN

DOC. REV A/1

XFMR2 Inc.	Title: Mechanical Dimensions For COMB04-4S Series		
UNLESS OTHERWISE SPECIFIED	P/N: XFATM2-COMB04-4S		REV: A
TOLERANCES:	DWN.	廖玉坤	Dec-06-00
.xxx ±0.010	CHK.	李清儿	Dec-06-00
Dimensions in Inch	APP.	BW	Dec-06-00
SHEET 2 OF 2			