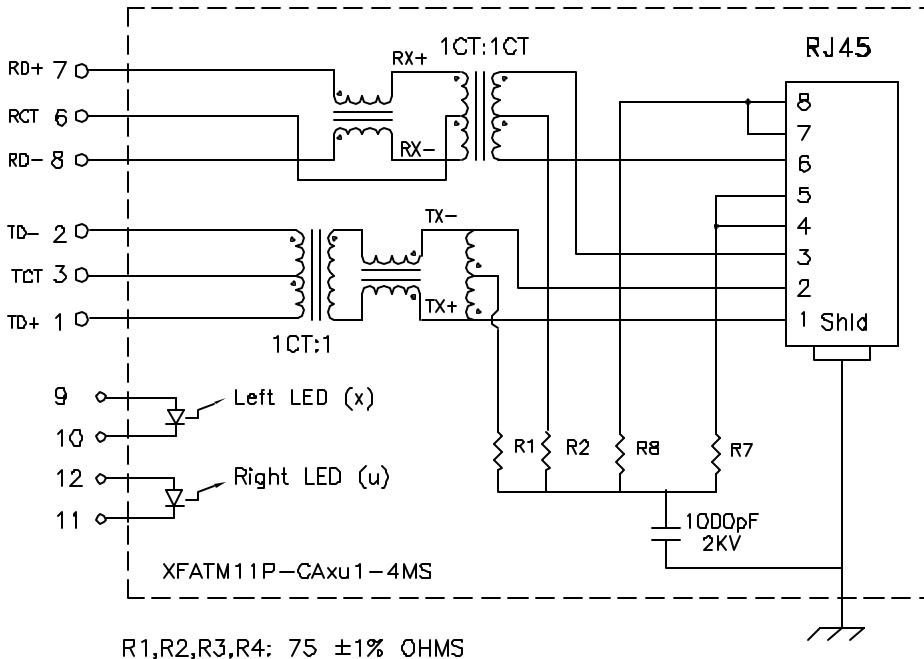


Schematic:



R1,R2,R3,R4: 75 \pm 1% OHMS

Electrical Specifications: @25°C

UTP Impedance: 100 OHMS

Turns Ratio: TX : 1CT:1 (\pm 3%) RX : 1CT:1CT (\pm 3%)

Isolation Voltage: 1500 VAC (Input to Output)

Rise Time (10-90%): 2.5nS Typ

LL: 0.4uH Max

CW/W: 28pF Max

UTP Side OCL: 350uH Minimum @100KHz,100mV 8mADC

Insertion Loss (0.3MHz-100MHz): -1.0dB Maximum

Return Loss: 1MHz-30MHz 40MHz 50MHz

-18dB Typ -16dB Typ -14dB Typ 60MHz-80MHz

CMRR: 30MHz 60MHz 100MHz -12dB Typ
-35dB Min -30dB Min -25dB Min

Crosstalk: 30MHz 60MHz 100MHz
-50dB Min -40dB Min -35dB Min

Complete the Combo P/N as follows:

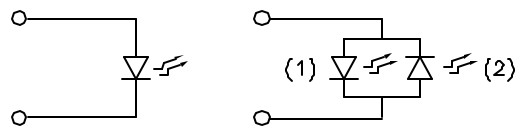
Replace 'x' & 'u' in the part number with one of the LED color letters:

Y=Yellow
G=Green
A=Amber
R=Red
'x' = Left LED Color
'u' = Right LED Color

C=Green(1)/Amber(2) Bicolor
D=Amber(1)/Green(2) Bicolor
M=Green(1)/Yellow(2) Bicolor
N=Yellow(1)/Green(2) Bicolor
P=Red(1)/Green(2) Bicolor
Q=Green(1)/Red(2) Bicolor

Single Color LED:

Bi-Color LED:



DOC. REV: A/1

Notes:

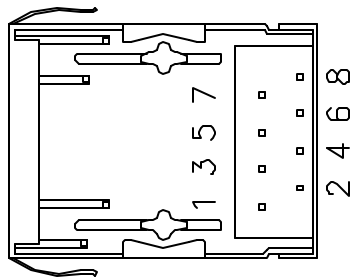
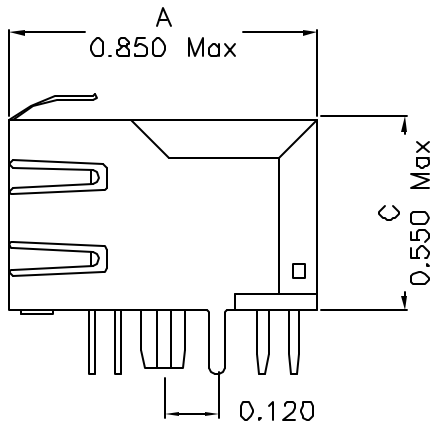
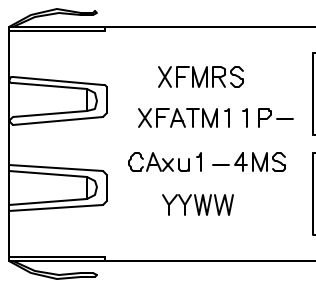
1. Solderability: Leads shall meet MIL-STD-202, Method 208D for solderability.
2. Flammability: UL94V-0
3. ASTM oxygen index: > 28%
4. Temperature rating: 155°C. UL file E151556
5. Operating Temperature Range: -40°C to +85°C

XFMRs Inc.	Title: SINGLE PORT COMBO		
	UNLESS OTHERWISE SPECIFIED TOLERANCES: .xxx \pm 0.010 Dimensions in Inch	P/N: XFATM11P-CAXu1-4MS	REV. A
		DWN.	Kang Chen Jun-28-04
		CHK.	YK Liao Jun-28-04
SHEET 1 OF 2	APP.	J Ng Jun-28-04	

PROPRIETARY:

Document is the property of XFMRs Group & is not allowed to be duplicated without authorization.

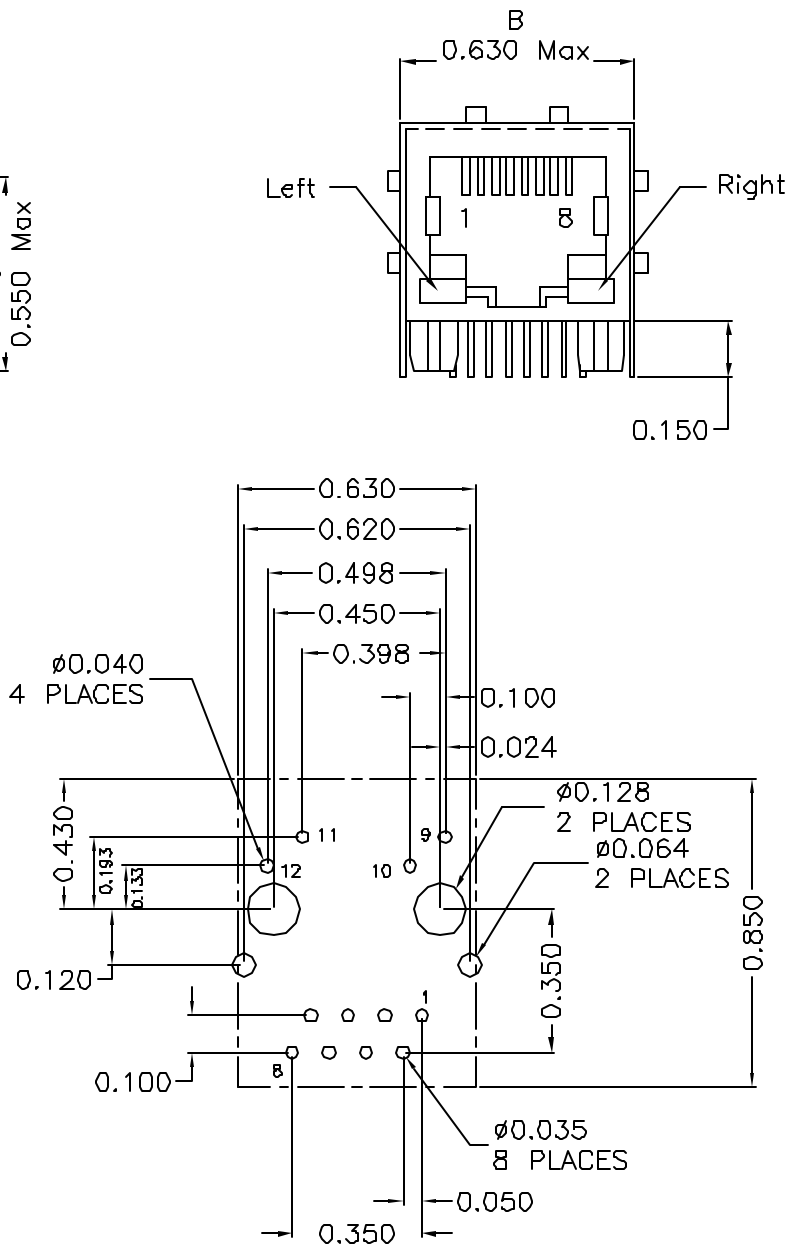
Mechanical Dimensions:



(BOTTOM VIEW)

Mounting Pattern:

(COMP SIDE)



XFMRS Inc.	Title: Mechanical Dimensions For CAxu1-4MS Series		
	UNLESS OTHERWISE SPECIFIED TOLERANCES: .xxx ±0.010 Dimensions in Inch	P/N: XFATM11P-CAxu1-4MS	REV. A
	DWN.	Kang Chen	Jun-28-04
	CHK.	YK Liao	Jun-28-04
SHEET 2 OF 2	APP.	J Ng	Jun-28-04

DOC. REV: A/1

PROPRIETARY:

Document is the property of XFMRS Group & is not allowed to be duplicated without authorization.