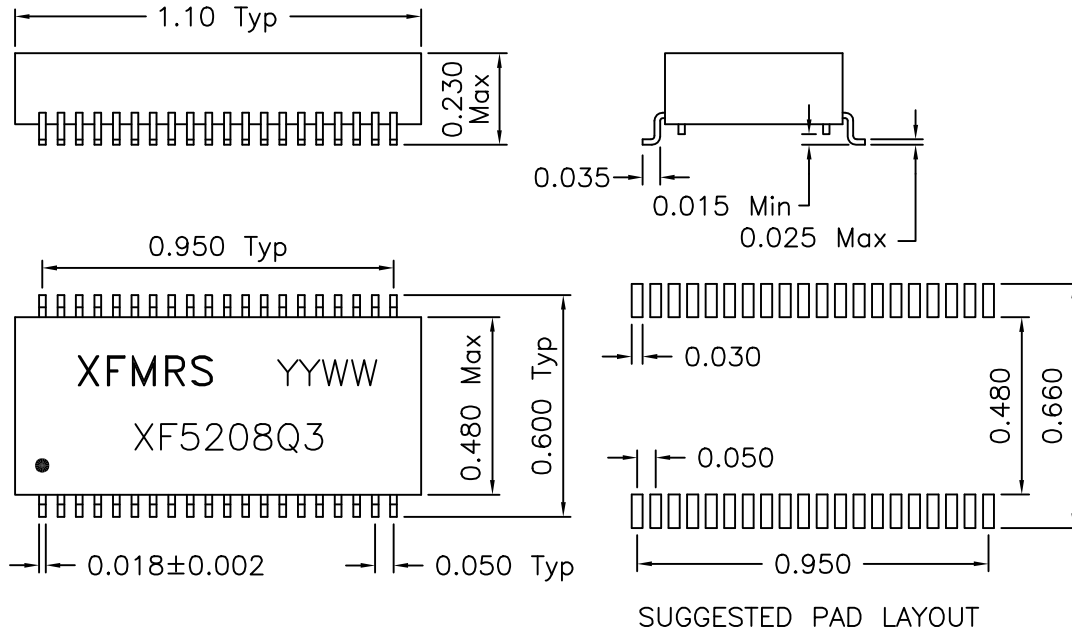
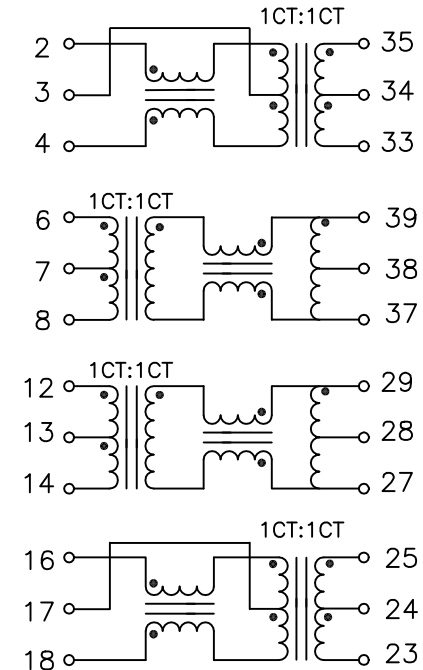


1. Dimensions:



2. Schematic:



3. Electrical Specifications: @25°C

Isolation Voltage: 1500 Vrms (Input to Output)

OCL: 350uH Minimum @100KHz, 100mV 8mADC

INSERTION LOSS: -0.5dB Max. @100KHz - 100MHz

RETURN LOSS (dB Typ):

2-30MHz	40MHz	50MHz	60-80MHz
-21dB	-17dB	-14.5dB	-12dB

CROSSTALK (dB Typ):	1MHz	30MHz	60MHz	100MHz
	-65	-55	-45	-35

Diff. to Common Mode Rejection (dB Typ)

1-60MHz	60-200MHz
-40dB	-30dB

Common to Common Rejection Ratio:

@0.1-60MHz -30dB Typ

DOC. REV: A/1

XFMRs Inc	Title: Quad Port 10/100BASE-TX Module	
	UNLESS OTHERWISE SPECIFIED	REV. A
TOLERANCES: .xxx ±0.010	P/N: XF5208Q3	DWN. 李清儿 Jun-5-98
Dimensions in INCH	CHK. 孙悦 Jun-5-98	APP. Joe Huff Jun-5-98
SHEET 1 OF 1		