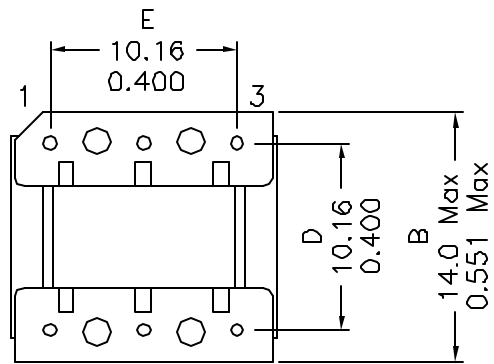
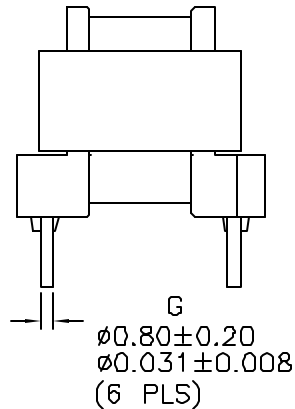
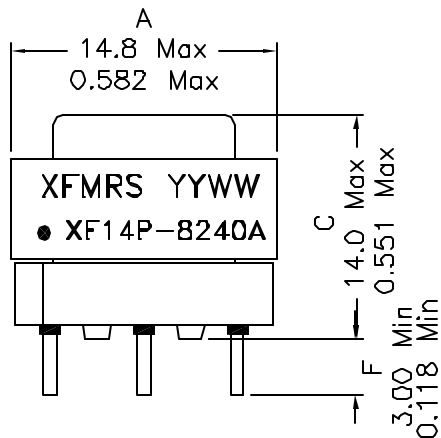
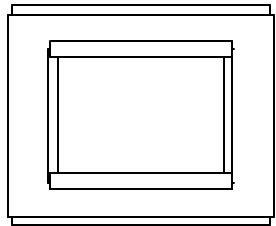


1. Mechanical Dimensions:

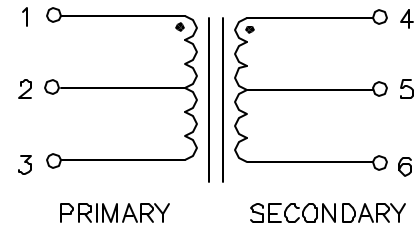


(BOTTOM VIEW)

Notes:

1. Solderability: Leads shall meet MIL-STD-202C, Method 208H for solderability.
2. Flammability: UL94V-0
3. ASTM oxygen index: > 28%
4. Insulation System: Class F 155°C. UL file E151556
5. Operating Temperature Range: All listed parameters are to be within tolerance from -40°C to +85°C
6. Storage Temperature Range: -55°C to +125°C
7. Aqueous wash compatible
8. Electrical and mechanical specifications 100% tested
9. RoHS Compliant Component

2. Schematic:



3. Electrical Specifications:

TURN RATIO: (1-3):(4-6) = 1CT:1CT±2%

IMPEDENCE: Designed to reflect 600 ohms on PRI with 600 ohms load on SEC.

OCL: Pins 1-3 1.0H Typical @1KHz, 1.0V (Lp Scale)

DCR: Pins 1-3 52±15% Ohms @20°C
Pins 4-6 59±10% Ohms @20°C

FREQUENCY RESPONSE: ±0.50dB, 300Hz - 3.5KHz

INSERTION LOSS: 1.5dB Maximum @1KHz, 20°C

RETURN LOSS: 23dB Typical vs. 600 ohms at 300Hz

HIPOT: 3750Vac PRI to SEC

2000Vac PRI to Core

DOC. REV: A/5

PROPRIETARY

Document is the property of XFMRs Group & is not allowed to be duplicated without authorization.

XFMRs Inc www.XFMRs.com		Title: MODEM TRANSFORMER	
UNLESS OTHERWISE SPECIFIED TOLERANCES: .xx ±0.30mm Dimensions in mm Inch	P/N: XF14P-8240A	REV. A	
	DWN.	Juan Mao	Apr-27-07
	CHK.	YK Liao	Apr-27-07
Scale: 2.5:1 SHT 1 OF 1	APP.	Joe Huff	Apr-27-07