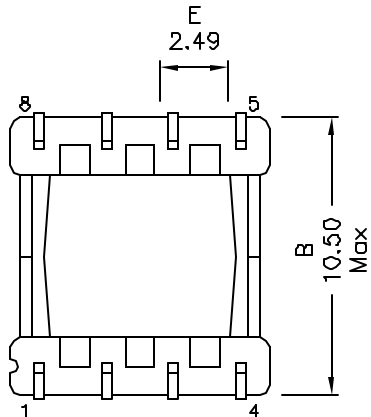
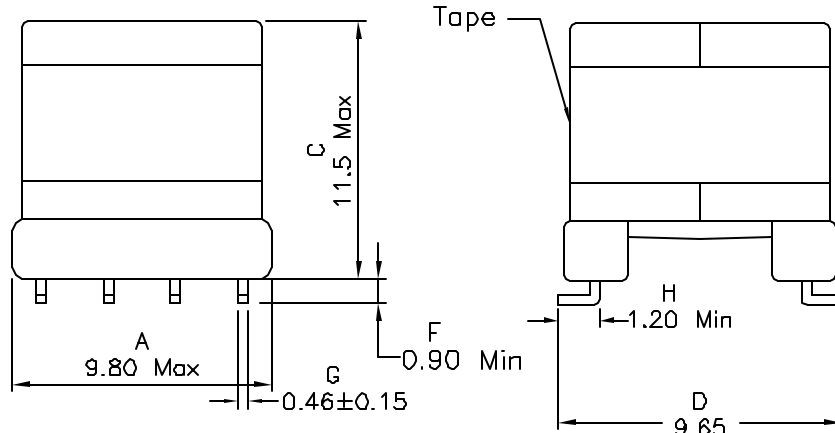
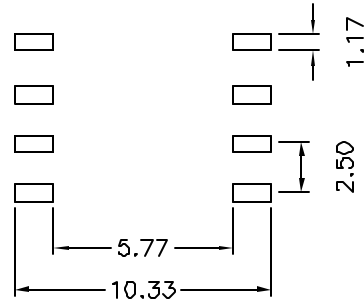


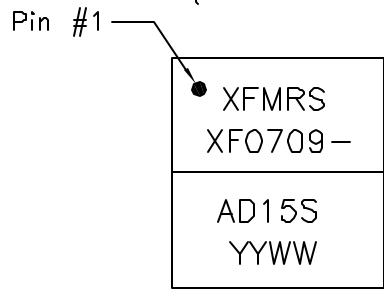
1. Mechanical Dimensions:



(BOTTOM VIEW)

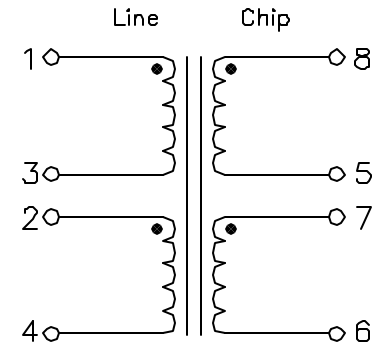


SUGGESTED PCB LAYOUT



Marking: (on Top)

2. Schematic:



3. Electrical Specifications: @25°C

OCL: Pins 1-4 750uH±7% @10KHz 0.1V, Tie Pins 2-3

LL: Pins 1-4 5.0uH Max @100KHz 0.1V, Tie Pins 2-3, Short Chip

THD: -85dB Max @150KHz, 4.24Vrms, Line:Chip

DCR: Pins 1-4 1.25 Ohms Max, Tie Pins 2-3

DCR: Pins 8-6 5.00 Ohms Max, Tie Pins 5-7

Turns Ratio: Pins (1-4):(8-6)=0.408:1.00±2%

Hipot: 1500Vac 500uA Max, Pin 1 to 8, Tie 2-3 & 5-7

Working Voltage: 250Vac

Notes:

1. Solderability: Leads shall meet MIL-STD-202C, Method 208H for solderability.
2. Flammability: UL94V-0
3. ASTM oxygen index > 28%
4. Insulation System: Class F 135°C. UL file E161886
5. Operating Temperature Range: All listed parameters are to be within tolerance from -40°C to +85°C
6. Storage Temperature Range: -55°C to +125°C
7. Aqueous wash compatible
8. SMD Lead Coplanarity: ±0.004"(0.102mm)
9. Electrical and mechanical specifications 100% tested
10. RoHS Compliant Component
11. Designed to meet UL508B0 for Basic Insulation requirements for a working voltage up to 250V.

XFMR5 Inc www.XFMR5.com	Title: ADSL TRANSFORMER		
	UNLESS OTHERWISE SPECIFIED TOLERANCES: .xx ±0.25 Dimensions in MM	P/N: XF0709-AD15S	REV. A
SHEET 1 OF 1	DWN.	罗振江	Feb-16-06
	CHK.	廖玉坤	Feb-16-06
	APP.	MS	Feb-16-06

DOC. REV: B/4